



Image Transform File

Viewer® Setup Guide

Operating Environment

● OS supported:

Windows XP, Windows 2003/2008 Server,
Windows Vista, Windows 7, Windows 7 64bit

● Memory: 512 MB or more recommended

● Free disk space: 5MB or more recommended. (Separate working storage also necessary.)

● Other necessary matters:

ITF Protector confirms Serial Number through the internet all the time.
Please use this software in the internet-connecting conditions.

☆ The capacities of CPU and Memory reflect the ITF converting and viewing speeds considerably.

Please update the capacities if higher speed is required.

☆ When you view the ITF files created, the same working space as used before compression is temporarily required.

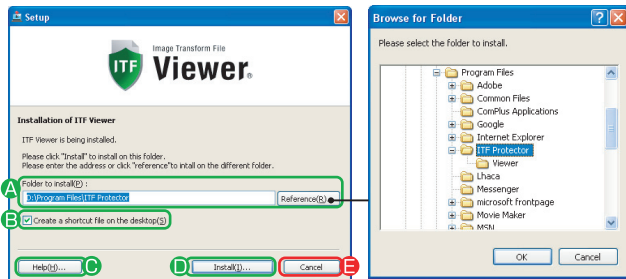
When you view large-sized images with high resolution, please check the availability of free disk space.

Installation

① Before installation of ITF Viewer, unzip the file to be downloaded, and double click

Setup.exe
Please read the license agreement. Click **[Agree]** when you agree with it.
You cannot use this software without the agreement.

② The screen below appears.



A Enter the folder path to install ITF Viewer. You can select and input the path from the folder reference screen by clicking **[Reference]**.

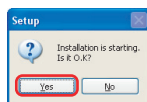
B When you check here, the shortcut icon is created on the desktop.

C When you click this button, the setup guide (this document) is displayed.

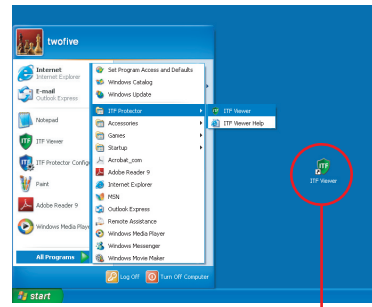
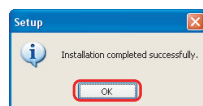
D When you fill out all the necessary information, click this button. Installation is started.

E To cancel the setup, click this button.

③ When you click **[Install]**, the message on the right appears. Click **[Yes]** to continue.



④ When the installation is completed, the message on the right appears. Click **[OK]** to finish. The installation is completed.

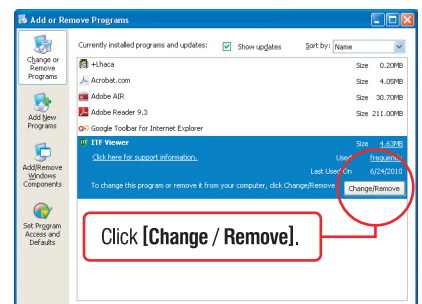


After the installation, the shortcut menu is added to the following structure on the program menu. After installation, open ITF file (the expansion is .itf). ITF Viewer automatically runs, and you can view ITF files.

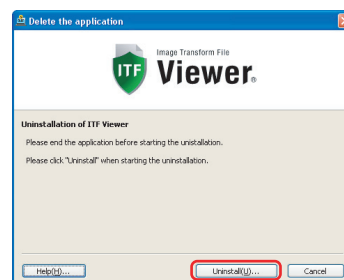
If you select **[Create shortcut file on the desktop]** at the time of installation, this shortcut icon is created on the desktop.

Uninstallation

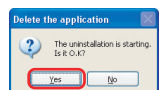
① Execute **[Add or Remove Programs]** from **[Control Panel]**, and select ITF Protector in the list of programs installed.



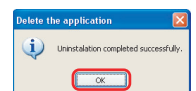
② The screen below appears.



③ When you click **[Uninstall]**, the message on the right appears. Click **[Yes]** to continue.



④ When uninstallation is completed, the message on the right appears. Click **[OK]** to finish it.



Online help, technical support, ITF Viewer free download **ITF Official Web Site** <http://itf.bz>

Exclusive Agency **AMCO**

AMCO Co., Ltd. Matsushita-Bldg. 2F, 4-5 Miyamoto-cho, Tarumi-ku, Kobe, Japan 655-0028

TEL: +81-78-939-6113 FAX: +81-78-707-6403 <http://www.amco-triton.co.jp> amco@triton.ocn.ne.jp

Developer **twofive**
synthesizing design

Twofive, Inc. Taiyo Bldg. 7F, 5-1-2 Kitanagasa-dori, Chuo-ku, Kobe, Japan 650-0012
<http://twofive.com>

* ITF Protector is a registered trademark of Twofive, Inc.

The product names and company names described in this brochure are the trademarks and registered trademarks of the respective companies.